

## Whelen Engineering – Charlestown, NH

### Boiler System #3 Burning PDCs

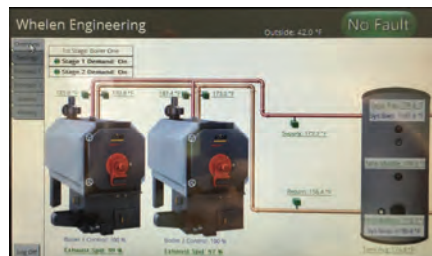


#### Project Description:

- Goals: To virtually eliminate all burning of fuel oil on the Whelen campus in Charlestown, NH by converting to boilers that burn Precision Dry Wood Chips, a locally produced biomass fuel manufactured by Froling Energy in Peterborough.
- This is the largest of the 3 biomass boiler rooms built on the campus since 2014.
- *The low cost of PDCs made this project viable!*

#### The biomass boiler system in Whelen #3::

- 2– Viessmann Vitoflex 300 RF Model KPT-540 Dry Chip/Pellet Boilers, each of these has a net output of 1.84 million BTU/hr. **Total = 3.68 million BTU/hr.**
- Each interior storage silo holds 36 tons of Froling Energy’s PDCs (for a total storage capacity of 72 tons)



- Above: Viessmann’s Ecotronic Control panel
- Left: De-ashing is automatic, into roll-away bins tied to the combustion chamber and at flue gas de-duster.

